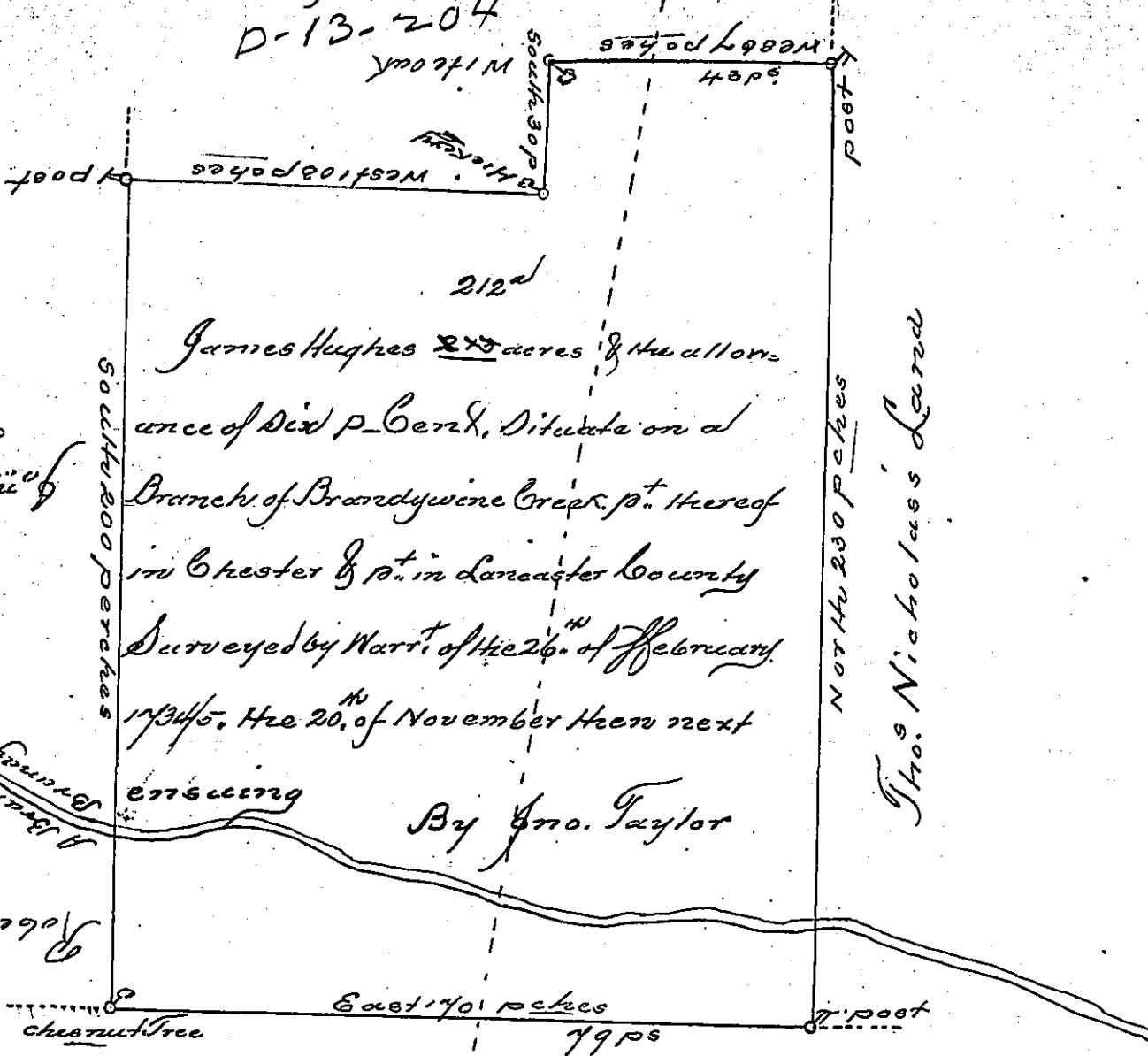


Map of ...
D-13-204
Mittout

A-62-174
Land
of J. M. Anderson



James Hughes 275 acres & the allow-
ance of Dix P. Bend, situate on a
Branch of Brandywine Creek, pt. thereof
in Chester & pt. in Lancaster County
Surveyed by Warrt. of the 26th of February
1734/5. the 20th of November then next

By Jno. Taylor

Robt Hughes's Land

Pg 157

IN TESTIMONY that the above is a copy of the original remaining on file in
the Department of Internal Affairs of Pennsylvania, made
conformably to an Act of Assembly approved the 16th day of
February, 1833, I have hereunto set my Hand and caused
the Seal of said Department to be affixed at Harrisburg,
this thirtieth day of January 1905

James P. Brown
Secretary of Internal Affairs.